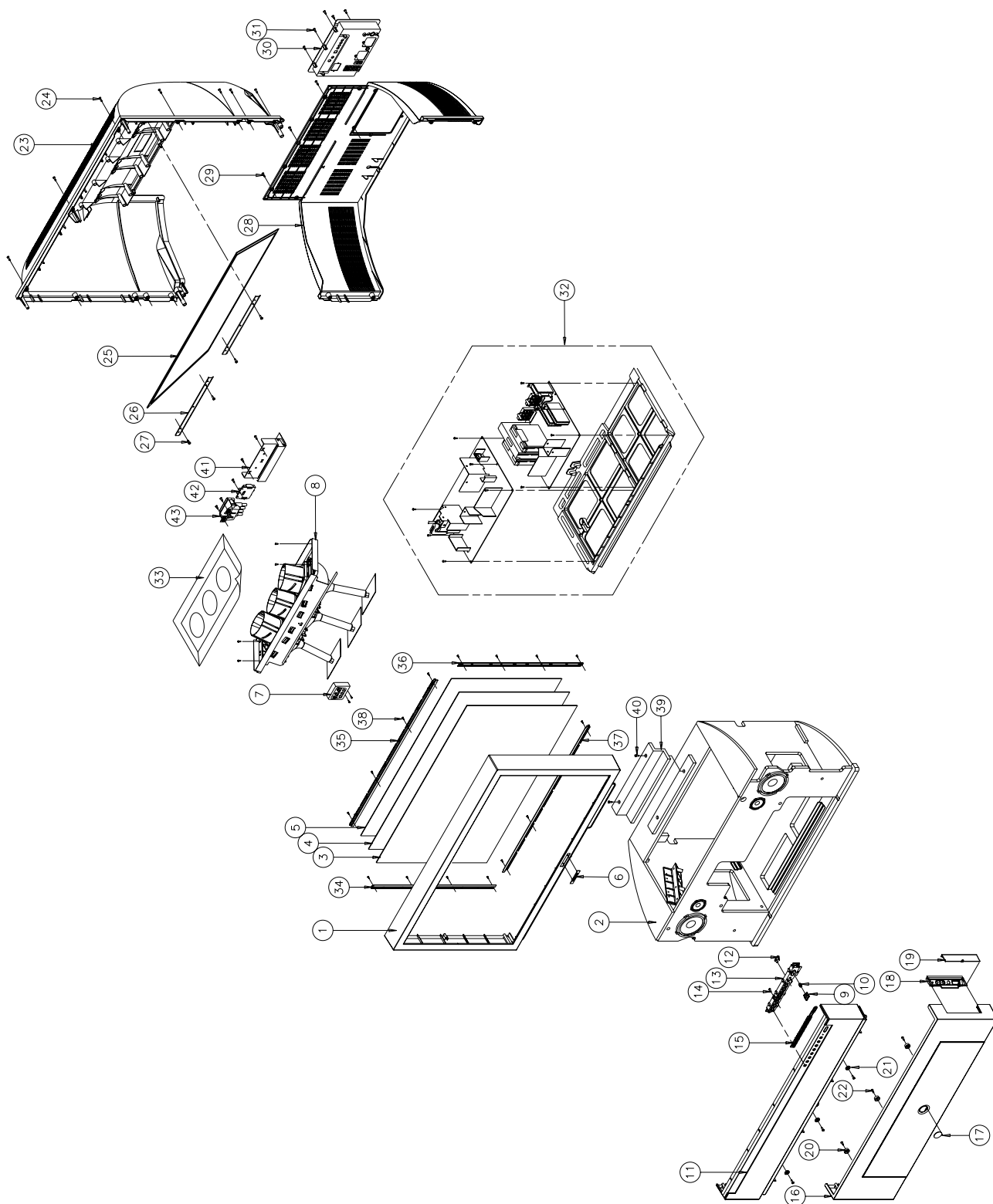


6. Exploded View & Parts List

6-1 42W5



6-2 HCM4215WX/XAC

No	Code No	Description;Specification	Q'ty	Remark	S.N.A
1	AA64-02727J	CABINET-FRONT,MASK TOP;42W5,HIPS,HB,G430	1		S.N.A
2	BP91-00005D	ASSY-CABINET,WOOD;,WOOD,MIJU,42W5	1		S.N.A
3	AA67-00207A	SCREEN-FILTER;;T=82%,960*552*2,G=110,AG	1		
4	AA67-00193A	SCREEN-TINT;42W,958*550,T=0.73,P=052	1		
5	AA67-00193B	SCREEN-FRESNEL;42W,960*552,T=2.0	1		
6	AA64-02211D	BADGE-BRAND;72MM,AL FORGING,DG703P,SAMSU	1		S.N.A
7	BP59-00005A	MODULE-FOCUS PACK ASS'Y;PJT TV,F301-P03A	1		
8	BP91-00423A	ASSY PRT;HCM4215WX/XAA,P55A,ASSY-PRT	1	*	S.N.A
9	AA64-02740B	KNOB-POWER;42W5,ABS,HB,G3676,SVM3012	1		
10	AA61-60003J	SPRING-CS;-SUS304,-,-,OD6,N7,OD6,-,-,-,	1		S.N.A
11	AA64-02726B	CABINET-PANEL CONTROL;42W5,HIPS,HB,G4309	1		S.N.A
12	AA64-02742A	WINDOW-RMC,LED;42W5,PC,CLR	1		S.N.A
13	AA64-02739B	KNOB-CONTROL;42W5,ABS,HB,G3676,SVM3012	1		
14	6003-001026	SCREW-TAPTITE;RH,+,B,M4,L15,ZPC(BLK),SWR	4	KC+CPC	
15	AA61-01130B	GUIDE-KNOB,CONTROL;42W5,ABS HB,G3676,SVM	1		S.N.A
16	AA64-02725G	CABINET-FRONT,BOT;42W5,HIPS,VO,G4309,DG7	1		S.N.A
17	AA64-02743B	BADGE-DECORATION;42W5,AL,DG703P,NI,RS	1		S.N.A
18	AA61-01128F	HOLDER-SIDE,A/V;42W5,ABS HB,G3676,DG703P	1		S.N.A
19	AA64-02780F	DOOR-AV;42W5,ABS HB,G3676,DG703P	1		
20	AA61-01132A	VELCRO-A;COMMANDO,BST1 1/4H	3		S.N.A
21	AA61-01133A	VELCRO-B;COMMANDO,BST1 1/4H	3		S.N.A
22	6003-001019	SCREW-TAPTITE;RH,+,B,M4,L12,ZPC(BLK),SWR	4	VC+CPC	S.N.A
23	AA64-02728A	CABINET-BACK, TOP;42W5,HIPS,HB,G4309	1		
24	6003-001026	SCREW-TAPTITE;RH,+,B,M4,L15,ZPC(BLK),SWR	11	CBT+CF	
25	AA67-00204A	MIRROR-FRONT;42W5,FSM,870*633*446	1		
26	BP61-00008A	BRACKET-MIRROR,ASSY;42W5,SECC,T1.0,01123	2		S.N.A
27	6003-001026	SCREW-TAPTITE;RH,+,B,M4,L15,ZPC(BLK),SWR	4	BM+CBT	
28	AA64-02729B	CABINET-BACK,BOT;42W5,HIPS,VO,G4309	1		
29	6005-001003	SCREW-WOOD;HH,+,M4,L19,ZPC(BLK),SWRCH18A	3	HC+CW	
30	BP96-00038A	ASSY COVER P-TERMINAL,ANT;42W5,HIPS VO,B	1		S.N.A
31	6003-001026	SCREW-TAPTITE;RH,+,B,M4,L15,ZPC(BLK),SWR	4	TB+RJK	
32	BP91-00242A	ASSY CHASSIS;HCM4215WX/XAC,P55A	1	*	S.N.A
33	AA60-00072B	SPACER-COVER,DUST;43,54,62J9,SPONGE 94HF	1		S.N.A
34	BP61-00025D	BRACKET-SCREEN,ASSY(R);42W5,SECC,T1.0,NE	1		S.N.A
35	BP61-00023D	BRACKET-SCREEN,ASSY(TOP);42W5,SECC,T1.0,	1		S.N.A
36	BP61-00026D	BRACKET-SCREEN,ASSY(L);42W5,SECC,T1.0,NE	1		S.N.A
37	BP61-00024D	BRACKET-SCREEN,ASSY(BOT);42W5,SECC,T1.0,	1		S.N.A
38	AA60-10011A	SCREW-TAPTITE;-SWRCH18A,M4,L12,HH,+,PC,	20	BS+CF	S.N.A
39	BP64-00029A	INLAY-SUPPORT;42W5,PS SHEET,T0.5,94V0	1		S.N.A
40	6005-001003	SCREW-WOOD;HH,+,M4,L19,ZPC(BLK),SWRCH18A	2	IS+CW	
41	AA95-02002A	ASSY SUB-PCB,CG AMP;COMMANDO	1		
42	AA94-08270A	ASSY PCB MISC-DY JACK;COMMANDO	1		S.N.A
43	AA26-00101A	TRANS FBT;FWZ50A001E/FFA97513B,12KV,5P,-	1		

6-2 HCM422WX/XAC

No	Code No	Description;Specification	Q'ty	Remark	S.N.A
1	AA64-02727L	CABINET-FRONT,MASK TOP;42W5,HIPS,HB,G430	1		
2	BP91-00005D	ASSY-CABINET,WOOD;WOOD,MIJU,42W5	1		S.N.A
3	AA67-00207A	SCREEN-FILTER;;T=82%,960*552*2,G=110,AG	1		
4	AA67-00193A	SCREEN-TINT;42W,958*550,T=0.73,P=052	1		
5	AA67-00193B	SCREEN-FRESNEL;42W,960*552,T=2.0	1		
6	AA64-02211E	BADGE-BRAND;72MM,AL FORGING,SVM1132,SAMS	1		S.N.A
7	BP59-00005A	MODULE-FOCUS PACK ASS'Y;PJT TV,F301-P03A	1		
8	BP91-00423A	ASSY PRT;HCM4215WX/XAA,P55A,ASSY-PRT	1	*	S.N.A
9	AA64-02740A	KNOB-POWER;42W5,ABS,HB,G3676,COT	1		
10	AA61-60003J	SPRING-CS;-SUS304,-,-,OD6,N7,OD6,-,-,-,	1		S.N.A
11	AA64-02726A	CABINET-PANEL,CONTROL;42W5,HIPS,HB,G4309	1		S.N.A
12	AA64-02742A	WINDOW-RMC,LED;42W5,PC,CLR	1		S.N.A
13	AA64-02739A	KNOB-CONTROL;42W5,ABS,HB,G3676,COT	1		
14	6003-001026	SCREW-TAPTITE;RH,+,B,M4,L15,ZPC(BLK),SWR	4	KC+CPC	
15	AA61-01130A	GUIDE-KNOB,CONTROL;42W5,ABS HB,G3676,SVM	1		S.N.A
16	AA64-02725F	CABINET-FRONT,BOT;42W5,HIPS,VO,G4309,SVM	1		S.N.A
17	AA64-02743A	BADGE-DECORATION;42W5,AL,NI,RS	1		
18	AA61-01128C	HOLDER-SIDE,A/V;42W5,ABS HB,G3676,SV-704	1		S.N.A
19	AA64-02780C	DOOR-AV;42W5,ABS HB,G3676,SV-704P	1		
20	AA61-01132A	VELCRO-A;COMMANDO,BST1 1/4H	3		S.N.A
21	AA61-01133A	VELCRO-B;COMMANDO,BST1 1/4H	3		S.N.A
22	6003-001019	SCREW-TAPTITE;RH,+,B,M4,L12,ZPC(BLK),SWR	4	VC+CPC	S.N.A
23	AA64-02728A	CABINET-BACK, TOP;42W5,HIPS,HB,G4309	1		
24	6003-001026	SCREW-TAPTITE;RH,+,B,M4,L15,ZPC(BLK),SWR	7	CBT+CF	
25	AA67-00204A	MIRROR-FRONT;42W5,FSM,870*633*446	1		
26	BP61-00008A	BRACKET-MIRROR,ASSY;42W5,SECC,T1.0,01123	2		S.N.A
27	6003-001026	SCREW-TAPTITE;RH,+,B,M4,L15,ZPC(BLK),SWR	4	BM+CBT	
28	AA64-02729B	CABINET-BACK,BOT;42W5,HIPS,VO,G4309	1		
29	6005-001003	SCREW-WOOD;HH,+,M4,L19,ZPC(BLK),SWRCH18A	3	HC+CW	
30	BP96-00038B	ASSY COVER P-TERMINAL,ANT;42W5,HIPS VO,B	1		S.N.A
31	6003-001026	SCREW-TAPTITE;RH,+,B,M4,L15,ZPC(BLK),SWR	4	TB+RJK	
32	BP91-00263A	ASSY CHASSIS;HCM422WX/XAC,P55A	1	*	S.N.A
33	AA60-00072B	SPACER-COVER,DUST;43,54,62J9,SPONGE 94HF	1		S.N.A
34	BP61-00025D	BRACKET-SCREEN,ASSY(R);42W5,SECC,T1.0,NE	1		S.N.A
35	BP61-00023D	BRACKET-SCREEN,ASSY(TOP);42W5,SECC,T1.0,	1		S.N.A
36	BP61-00026D	BRACKET-SCREEN,ASSY(L);42W5,SECC,T1.0,NE	1		S.N.A
37	BP61-00024D	BRACKET-SCREEN,ASSY(BOT);42W5,SECC,T1.0,	1		S.N.A
38	AA60-10011A	SCREW-TAPTITE;-SWRCH18A,M4,L12,HH,+,PC,	20	BS+CF	S.N.A
39	BP64-00029A	INLAY-SUPPORT;42W5,PS SHEET,T0.5,94V0	1		S.N.A
40	6005-001003	SCREW-WOOD;HH,+,M4,L19,ZPC(BLK),SWRCH18A	2	IS+CW	
41	AA95-02002A	ASSY SUB-PCB,CG AMP;COMMANDO	1		
42	AA94-08270A	ASSY PCB MISC-DY JACK;COMMANDO	1		S.N.A
43	AA26-00101A	TRANS FBT;FWZ50A001E/FFA97513B,12KV,5P,-	1		

MEMO